



# Rainscreen XP™

CUSTOM ARCHITECTURAL PLATE FACADE SYSTEM

Rainscreen XP™ is a customizable, highly engineered, open joint and drained and back-ventilated metal plate rainscreen panel system that is capable of producing stunning high end aesthetics for the distinguished designer and building owner.

Overly is a leader in architectural metal exterior cladding systems and ornamental metals. Specializing in rainscreen, architectural metal panel wall systems, roofs, domes, spires, and geometrically challenging designs, Overly can manufacture to an architect's most difficult design and specification.



**OVERLY**

CUSTOM METAL SYSTEMS

SINCE 1888

# Rainscreen XP™

CUSTOM ARCHITECTURAL PLATE FACADE SYSTEM



## THE OVERLY ADVANTAGE

### DESCRIPTION

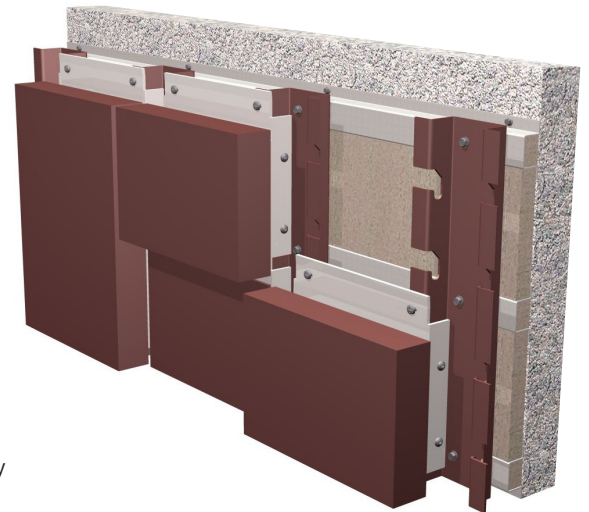
Rainscreen XP™ (RXP™) is for use in exterior wall cladding and offers the designer creative flexibility. An open joint, back-ventilated rainscreen cladding system, RXP™ is capable of producing stunning high end aesthetics by using solid plate metal panels with sharp contours and hard edges. RXP™ panels and support tracks are self aligning, using a "hook and pin" attachment method, which makes it a cost-effective installation.

### DELIVERABLES

Deliverables include shop drawing submittals, a structural design analysis, factory formed metal panels, related metal flashings, hardware and the option to include Overly On-Site™ factory mechanics to assist with the initial layout, installation start-up, and interim and final inspections.

### FEATURES AND OPTIONS

- Panel Size: Maximum Standard Panel Size: 48" x 144"
- Panel Depth: 2 3/4" minimum – 3" standard (includes panel unit and vertical support track).
- Panel Reveals: 1/4" minimum – Adjustable in 1/4" increments up to 2" wide.
  - Custom fabricated panel units
  - Free floating, yet secure, panels accommodate movement during thermal cycling
  - Sequential and non-sequential installation design is available
  - Custom painted finishes are applied post-fabrication
  - Panel units can incorporate multiple colored surfaces with flexible shape configurations
  - Tested to ASTM E 330 (Structural Performance)
  - Manufacturer's 2 Year Material & Workmanship Warranty
  - 10 and 20 Year Paint Finish Warranties are available



### MATERIALS & FINISHES

MATERIAL	PANEL THICKNESS	FINISHES
<input type="checkbox"/> Aluminum	<input type="checkbox"/> 0.125" (1/8") <input type="checkbox"/> 0.187" (3/16")	Painted – Perforated
<input type="checkbox"/> Stainless	<input type="checkbox"/> 0.120" (11GA)	2D – Matte – Directional – Non-directional – Specialized Finishes

Contact Overly for materials and metal thicknesses not listed. Recycled content varies upon material selected. All metal components are 100% recyclable. Material and finish warranties vary accordingly by selection. Overly fabricates from stretcher-leveled coil sheet materials. Natural oil canning is not a cause for rejection. Some materials and finishes are subject to minimum size orders.



1-800-979-7300  
**overly.com**

We provide free cost estimates and detailed quotations. Our engineering deliverables include shop drawings, anchor details, and wind load calculations. We can fully engineer our materials to local codes with an engineer registered and licensed in your state.

Contact Overly to learn how this panel system can be used on your project.

**OVERLY**

CUSTOM METAL SYSTEMS

SINCE 1888

