

### TECHNICAL INFORMATION

#### Features

- Formed panel returns
- Available in a variety of finishes
- Can be bent and curved
- Exposed sealant at panel joints
- Flexible design parameters
- Available in most standard and complex geometric shapes
- Non-sequential installation
- Sealed or welded corners available

#### Panel Depth

- 1 1/8" (26mm) min.
- 1 1/4" (32mm)
- 1 1/2" (38mm) max.

#### Panel Joint Dimensions

- 1/2" (12mm) min.
- 5/8" (16mm)
- 3/4" (19mm) max.

#### Panel Sizes

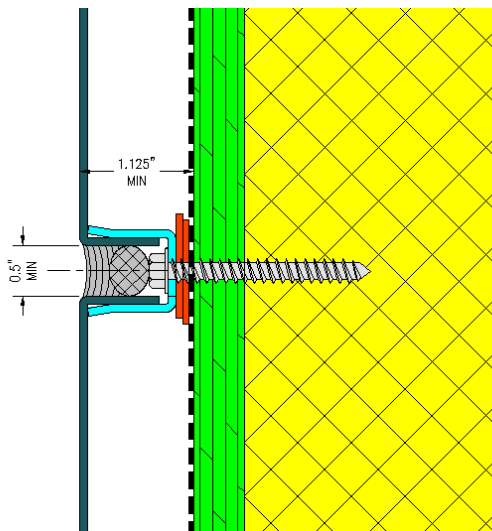
- Large format panels available.
- Certain metals/finishes may restrict panel size. Actual panel may be limited by span and design load criteria.

Material	Panel Thickness			Finishes
<input type="checkbox"/> Aluminum	<input type="checkbox"/> <u>0.080"</u> 12GA	<input type="checkbox"/> <u>0.090"</u> 11GA	<input type="checkbox"/> <u>0.125"</u> 1/8	Mill - Pre-Coated – Post Paint
<input type="checkbox"/> Stainless	<input type="checkbox"/> <u>0.075"</u> 14GA	<input type="checkbox"/> <u>0.105"</u> 12GA	<input type="checkbox"/> <u>0.120"</u> 11GA	Mill – Matte - Specialized Finishes
<input type="checkbox"/> Copper	<input type="checkbox"/> <u>0.032"</u> 24oz	<input type="checkbox"/> <u>0.043"</u> 32oz	<input type="checkbox"/> <u>0.064"</u> 48oz	Cold Rolled - Pre-Weathered
<input type="checkbox"/> Zinc	<input type="checkbox"/> <u>0.039"</u> 1.0mm	<input type="checkbox"/> <u>0.047"</u> 1.2mm	<input type="checkbox"/> <u>0.059"</u> 1.5mm	Natural - Pre-Weathered

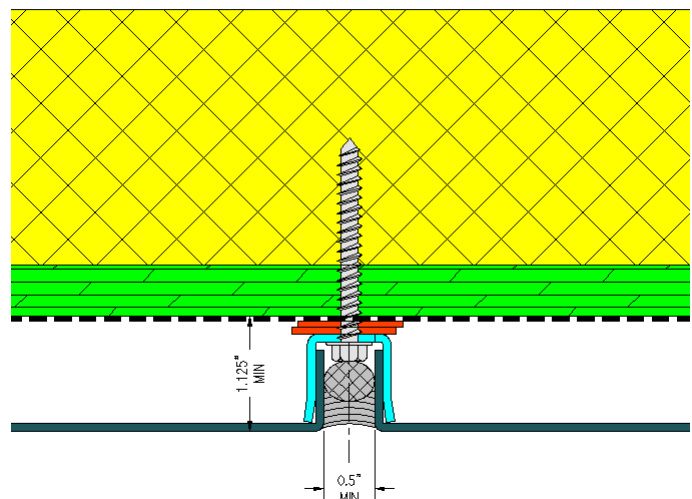
#### 100% RECYCLABLE - RECYCLED CONTENT VARIES UPON MATERIAL SELECTED

1. Finish availability may vary based on material and thickness.
2. Must be installed with a waterproof membrane or AWB lined back-wall.
3. System package includes metal panels, hardware, and related metal flashings.
4. Submittal drawings and a professional engineering analysis are standard.
5. Overly On-Site™ mechanics assist with initial layout/start up.
6. Can be mounted to plywood or a dedicated sub-framing attachment systems.
7. Optional sub-framing can be supplied if required.
8. Pre-finished materials may craze at bends.
9. Light gauge material can cause sheet deflection.
10. Concealed stiffening ribs are available if required or requested.
11. ASTM E 330 (Structural Performance) - Testing and engineering as specified by project requirements.
12. Manufacturer's 2 Years Workmanship Warranty. Material and finish warranties vary accordingly by selection.

#### Horizontal Joint



#### Vertical Joint



**CONTACT OVERLY FOR DETAILS**