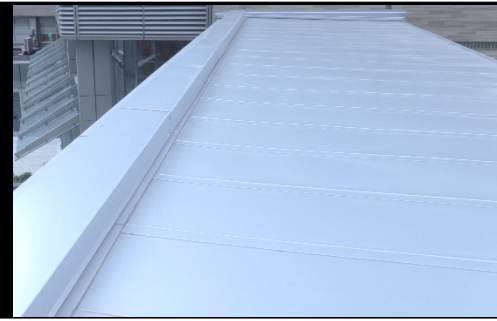
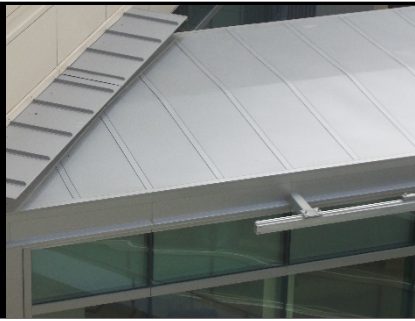


# EVOLUTION™

CUSTOM ARCHITECTURAL METAL ROOF SYSTEM



## THE EVOLUTION ADVANTAGE

### DESCRIPTION

The EVOLUTION™ system is a custom architectural metal roof and wall system without raised battens for a smooth contemporary design. It features concealed fasteners and a continuous internal drain channel. It can be used on straight, concave, and convex surfaces.

### WHAT'S INCLUDED

Included are shop drawing submittals, a structural design analysis, factory formed panels, flashings, closures, hardware, and the option to include an Overly mechanic to assist with the initial layout and installation start-up.

### FEATURES AND OPTIONS

- Maximum panel spacing is 48" o.c.
- Maximum panel length is 25'-0".
- All fasteners are concealed.
- Internal drain channel extrusions.
- Can be used on Flat, Concave, and Convex surfaces.
- Can be used as a Roof System or Wall System, Interior or Exterior.
- Project specific structural design calculations are used to confirm maximum panel size, span, and fastener type and frequency.
- Manufacturer's 20 year leakproof performance warranty is standard.

### TESTING DATA

- UL 580 Class 90 (Wind Uplift Resistance)
- ASTM E283 (Air Infiltration)
- ASTM E330 (Structural Performance)
- ASTM E331 (Water Penetration)
- Testing is not applicable to all substrates, materials, and dimensions.

### MATERIALS & FINISHES

| MATERIAL  | PANEL THICKNESS                               | FINISHES   |
|-----------|---|--|
| Aluminum  | 0.040" (18GA), 0.050" (16GA) & 0.063" (14GA). | PVDF Standard, Custom, Weathered Patina Prints, Metallics, Micas, & Textures |
| Stainless | 0.048" (18GA) and 0.060" (16GA)               | 2B, Matte, Directional, & Non-directional Specialized Finishes               |
| Copper    | 0.032" (24oz) and 0.043" (32oz)               | Cold Rolled, Coated, Textured, & Pre-Weathered                               |
| Zinc      | 0.030" (0.8mm) and 0.059" (1.5mm)             | Back Coated, Natural, Pre-Weathered, & Colored                               |

- Contact Overly for materials and metal thicknesses not listed.
- Recycled content varies upon material selected. All metal components are 100% recyclable.
- Material and finish warranties vary accordingly by selection.
- Overly fabricates from leveled-coil sheet materials. Natural oil canning is not a cause for rejection.
- Some materials and finishes are subject to minimum size orders.

1-800-979-7300  
[overly.com](http://overly.com)

We provide free cost estimates and detailed quotations. Our engineering deliverables include shop drawings, anchor details, and wind load calculations. We can fully engineer our materials to local codes with an engineer registered and licensed in your state.

Contact Overly to learn how this panel system can be used on your project.

**OVERLY**

CUSTOM METAL SYSTEMS

SINCE 1888